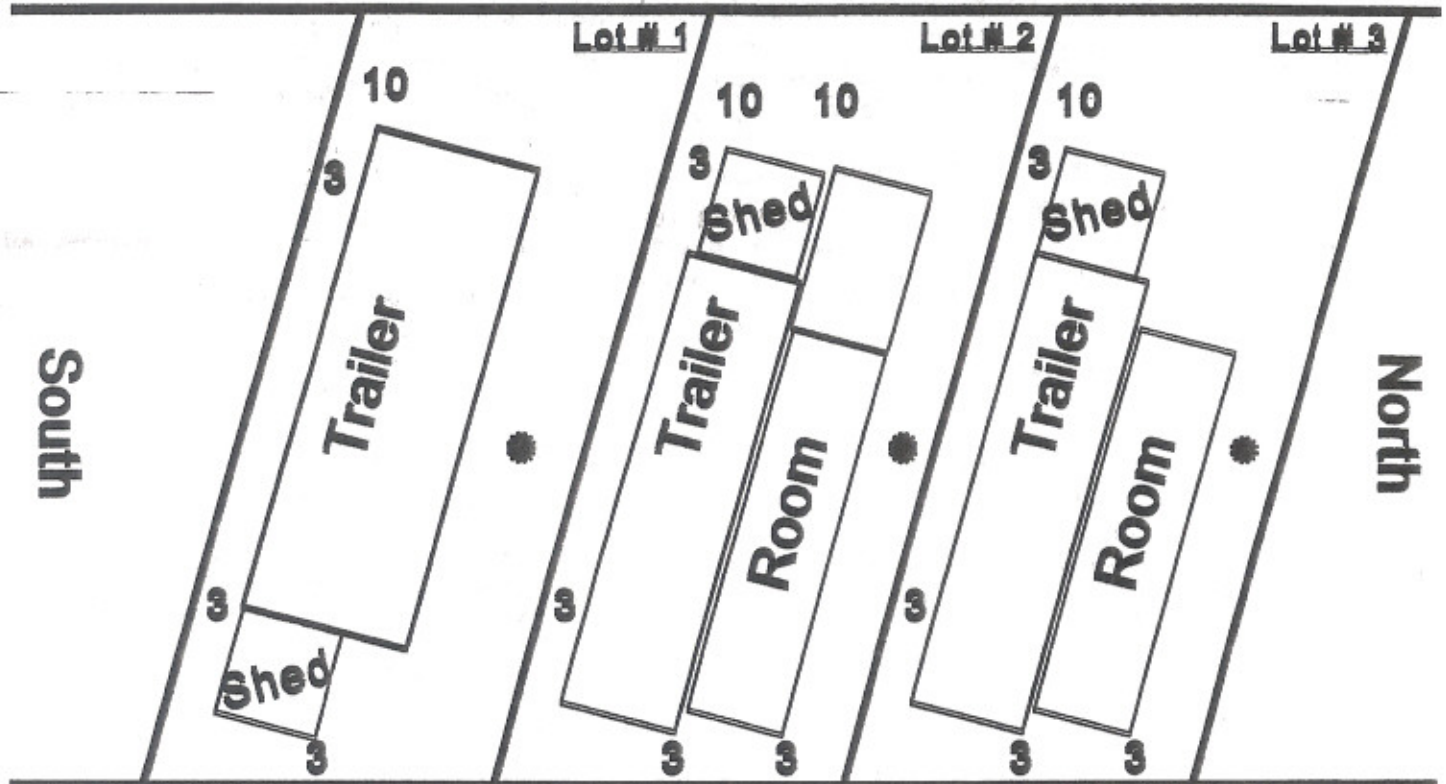


Set backs for the following lots.

2000 to 2019 2100 to 2119 2200 to 2219 2300 to 2313  
2400 to 2413 2500 to 2519 2600 to 2619 2700 to 2719

## Street West Side of LOT

10 feet from road side



## Street East Side of LOT

3 feet from road side

Lots 1 2 & 3 show different configurations of trailer, shed, and carport.

Please note the West side of the lot is the ten (10) feet from the road side.

The East side of the lot is the three (3) feet from the road side.

All trailers, sheds, etc, must be Three feet from South lot line.

All lots may have a eight foot room, as long as it doesn't end closer than three feet from the lot line.

● Any addition larger than eight (8) feet must end ten feet from the lot line.

Please see other side for other lot specifications

# R.V. placement, and set back

Orange County Code and the Condominium Association are very specific as to the placement of your R.V. If you have any questions or concerns, please call your landlord (if your renting) or the Condominium office (if you are the owner).

Thank you for your cooperation.

Requirements for Sites # 100 through # 882 (original section).

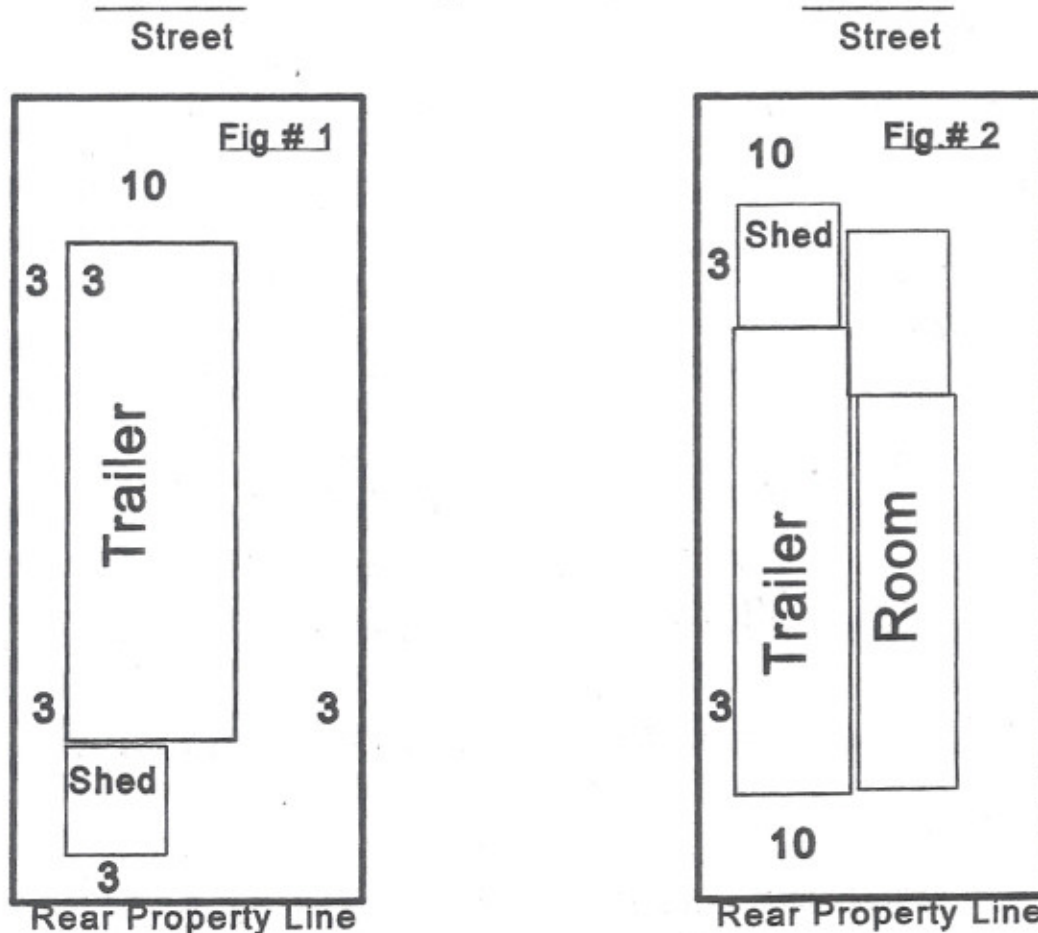
Looking at the R.V. from the street, the R.V. must be three (3) feet from the right property line, three (3) feet from the rear property line, ten (10) feet from the front (street side) property line.

You may build a eight (8) foot wide room on any of the lots, providing the Finished room is not closer than three (3) feet to the left lot line. You may build a wider room if there is ten (10) feet from the finished room to the left lot line. Fig.#1

Lots # 701 to 839 1001 to 1414 and most of the lots in 2B1 & 2B2

All set backs are the same as above, except the rear set back which is ten (10) feet to the rear lot line from the R.V. Fig.#2

NOTE: some lots in 2B1 & 2B2 may have to set the R.V. ten (10) feet from the right lot line. Orange County has the last word !



Note: The R.V. must be parked at least three (3) feet from the right side lot line, the three (3) feet is measured from the extended Slide Outs, Tip Outs or any large protrusion.

See other side for set backs for lots

2000 to 2019 - 2100 to 2119 - 2200 to 2219 - 2300 to 2313

2400 to 2413 - 2500 to 2519 - 2600 to 2619 - 2700 to 2719